

GVDC HONG KONG

Room 301-312, 3/F, Metro Centre I,
32 Lam Hing Street, Kowloon Bay,
Hong Kong
Tel: (852) 3199 0388

GVDC SINGAPORE

10 Raeburn Park, Block B,
#02-12, Singapore 088702
Tel: (65) 6499 1268

GVDC SHENZHEN

1-12 Unit, Level 28, Block A,
Xintian Century Business Center,
Shixiabei Second Street West,
Futian District, Shenzhen, P.R.C
Tel: (86) 755 2216 5373

GVDC MALAYSIA

1 Suite 2, 1st Floor 2J-1,
Jalan Giam Taman Majidee 80250,
Johor Bahru, Johor, Malaysia
Tel: (65) 6499 1268

Email: info@globalvdcl.com

GLOBAL VIRTUAL DESIGN & CONSTRUCTION LTD
© 2022 All Rights Reserved.

Global Virtual Design & Construction Ltd.

STRATEGIC PARTNERS



Highlight :

Compliance with ISO 9001 : 2015 and ISO 19650 : 2018.



ISO 9001 : 2015
Certificate No. : CC 7941



ISO 19650-1/2 : 2018
Certificate No. : KM 772720



[Facebook.com/globalvdcl](https://www.facebook.com/globalvdcl)



www.globalvdcl.com

Be GREEN

Be LEAN

Be BIM



Laser Scan technology can minimize the environmental impact and improve the efficiency in the redevelopment stage. The existing environment can be stored as point cloud data and these data can be used for logistic analysis, construction sequence simulation and enhance the awareness of risk and safety problem.



DEMOLITION & RENOVATION

For day-to-day management of buildings, immediate responses are always required in many maintenance activities. With EcoDomus, we create the Digital Twin and bring the value of BIM to building owners by emphasising data management and maintenance of efficiency for better cost control and facilities operations.



ASSET & FACILITY MANAGEMENT

Unclear shop drawings for poor fabrication often leads to clashes in fabrication. But with the edging software Tekla™, 3D visualizations and alternative solutions can be provided to project team for fabrication management, erection planning and potential problems findings.



PRE-FABRICATION

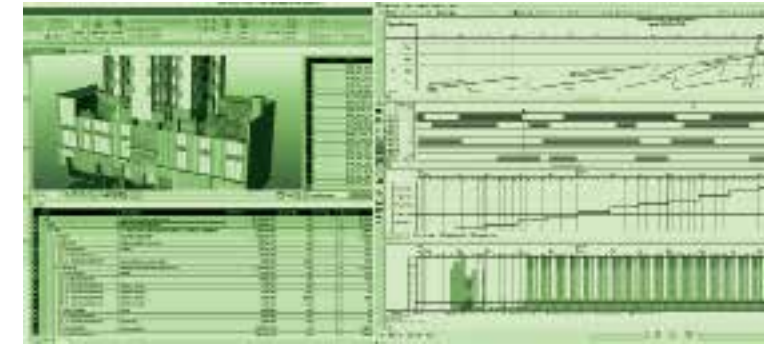
Full Life Cycle Management

SURVEY & ANALYSIS



During the planning exploration process, Unmanned Aerial Vehicle (UAV) can extract the accuracy and precision geographic data. The data can be imported into Geographic Information System (GIS) with AI for analyzing and managing site infrastructures to optimize design procedure. Moreover, EcoDesigner Star can help identify energy performance implications from land analysis and decision-making.

PLANNING & ESTIMATION



In the planning and estimation stage, BIM can be used to integrate designer's ideas into a single model for a better design visualization and collaboration. Vico Office Suit analyze the BIM data to producing the 4D scheduling and 5D estimation automatically. All these greatly facilitate construction progress and cost estimation preparation.

CONSTRUCTION



Construction planning is the process of identifying activities and resources required to make the physical reality. Project control and model-based quantity takeoff could be achieved easily using Vico Office Suite. Vico extends the potential of IFC models with constructability analysis, 4D scheduling and 5D estimating.



GVDC Training Centre Our Certified Training Services

Official website:
<https://bimtraining.globalvdc.com>



By hosting different I.T. BIM training and educational programmes, we helped external design consultants, engineers, quantity surveyors, contractors, and building owners to excel in the power and beauty of BIM technology. BIM Education such as Modeling Training, 4D, 5D BIM Workshop, CCBM, CCBC and AI Full Life Cycle Management course, etc is offered. The training is not only provided locally in Hong Kong but also expanded to China, Singapore and Malaysia.

Our training centre is an Autodesk authorized centre and it guaranteed tutors and courses quality. Our centre is fully equipped with advanced workstations, broadband Internet access, Wi-Fi and multimedia audiovisual setup.

FACILITY RENTAL



TRAINING CLASSROOM



COACHING AREA



About Us

Global Virtual Design & Construction Limited (GVDC) – The company, wholly owned by Yau Lee Holdings Limited, was established in early 2013 with a pool of experienced Engineers, Quantity Surveyors, Designers, IT experts, BIM experts and BIM Modellers. Singapore, Malaysia and China offices were set up at the end of 2013, the end of 2014 and quarter 3 of 2015 respectively. 40 key staff in GVDC and around 30 supporting technical staff from other subsidiaries are ready to provide professional services.

We provide BIM training and consultancy services for Hong Kong, Macau, China, and ASEAN countries such as Singapore and Malaysia. We are dedicated to providing BIM and VDC services for building projects throughout their entire cycles from planning, design development, tendering and procurement, fabrication and construction to facility operation and maintenance as well as renovation.

GVDC provides all standard BIM services as available in the market including 2D, 3D, 4D 5D BIM and Digital Twins consulting services as well as one-stop customizable solutions particularly involving BIM implementation, training, evaluation & advice, data management, project lifecycle management and multidisciplinary design optimization in all stages.

We aim to Be GREEN, Be LEAN and Be BIM and to hold the leadership in the industry, particularly in the advanced 4D, 5D and Digital Twins solutions.

We have formed long-term strategic partnerships with several renowned professionals, such as VHSOFT Technologies Co., Limited, Graphisoft SE, Esri China (Hong Kong) Limited, Kallos Studio, Autodesk, Trimble, and Alibaba Cloud.

GVDC is ready to provide professional services such as software integration and consulting services to our valuable customers and clients regardless of location, time and scale in multi-disciplinary. We are committed to delivering performance-based high-quality services and to care for clients, end-users and other stakeholders' satisfaction at the highest priority.

In addition, we fully understand the industry demand and market trend and we are keen to carry out continuously innovative research and development to enhance our performance and differentiate the company in the building industry by providing the highest quality of services. By adopting VDC, we believe that the philosophy behind the Integrated Full Life Cycle Management Approach in a holistic manner can greatly reduce time, cost and manpower while maximizing productivity, and ultimately driving the project towards success, not to mention, above all to contribute to creating a Smart City.



FULL LIFE CYCLE MANAGEMENT (FLCM) CONSULTANCY

GVDC is committed to working closely with clients throughout the whole FLCM. We provide implementation and delivery of reinvented concepts to achieve accurate construction planning and control, as well as improve visualization.



DRONE / UNMANNED AERIAL VEHICLE

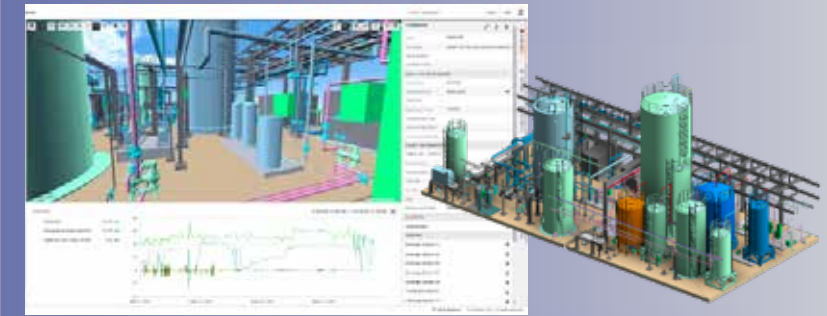
GVDC is the first service provider in Hong Kong to implement drone technology on a construction site, as well as create 3D Models using a photogrammetry algorithm. Using drones to obtain detailed high-quality aerial images or videos which allows project team members to view aerial progress shots across the construction site. Photogrammetry allows us to create a 3D model from overlapping images. The 3D model or aerial photos are compared with the arborist's report to confirm all the data are accurate in effective and scientific ways.



COMMON DATA ENVIRONMENT (CDE)

GVDC adopted EcoDomus which fulfilled ISO19650 as a CDE software platform to facilitate the BIM model review, comments and issues tracking between the project team. The software platform provides easily accessible and accurate asset information using Asset Information Models (AIMs). Data will be pushed from existing systems/platforms via web and field viewing tools. Thus, the platform improves the design and construction data collection and handover for ongoing facilities management, operations and maintenance.

Services & Solutions



AM & FM MANAGEMENT SOLUTIONS

With our based platform EcoDomus, users can edit building data in a secured online environment in collaborative mode. The platform provides a unique way for extracting and editing COBie data from IFC, Autodesk Revit, Bentley AECOsim, and Trimble Tekla, and allows for editing data on iPads. Also, the integrated platform utilizes various GIS engines to visualize asset data, like ESRI ArcGIS and Google Maps. Such data can be used to conduct pre-construction planning or analyze which asset or location may cause problems in the real world.



3D LASER SCANNING

GVDC has adopted 3D Laser scanning technology and has had its team and equipment since 2013. The scanner will automatically acquire a so-called 'point cloud' in high resolution. The clouds acquired will then be connected to each other through the overlapping areas acquired from several different station points. All necessary information will be collected, avoiding the risk of returning to the site to integrate with new measures.



BIM-ENABLED BLOCKCHAIN MULTIFUNCTIONAL PLATFORM

BEANiE, a BIM-enabled Blockchain Multifunctional Platform which uses Blockchain technology to store digital data. The primary features of BEANiE include Offsite & Onsite QA/QC records, Digital Works Supervision System, Logistic & Fleet Monitoring, Factory Monitoring System.